



1955
 FINAL PLAN APPROVED
 GREENVILLE CITY PLANNING & ZONING COMMISSION
 DATE: 1-4-55 BY: *Angie H. Rodgers*
 SECRETARY OF COMMISSION

Changes in lot layout and proposed street entrance in final plat of Belle Meade, approved by Planning and Zoning Commission on 11-6-54.

SEE JUDGMENT ROLL 11-14-54 of *Westerly*
 And Recorded in Plat Book Page 116 to 117
Greenville, S.C.
 Registrar James Cunningham Greenville County, S.C.

S. C. HWY. NO. 291

AUGUSTA RD.

DESCRIPTION
 " " Page

ROW

for plat of *Amber-o-w*
 all plat bk 1/124 14 1955
 6621

EE - 116 + 117

— INSERT —

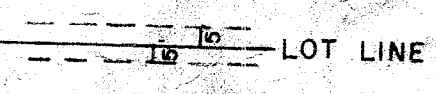
— SEE INSERT —

64a Inman to Derby Heights
484-225
that included parcel



SECTION 1 - SOUTH & WEST OF
E. DORCHESTER BLVD.
SECTION 2 - EAST OF E. DORCHESTER BLVD.

NOTE -
THERE IS A 5' DRAINAGE &
UTILITY EASEMENT ALONG
ALL SIDE & REAR LOT LINES.



• CONCRETE MONUMENTS

SECTION 182
PLAT OF

BELLE MEADE

NEAR
GREENVILLE, S. C.

PROPERTY OF
DERBY HEIGHTS INC.

SCALE 1 in = 100 ft.

JUNE, 1954

I hereby certify that I am the owner
of property shown on this plat, and
approve of the subdivision thereof
as shown
Derby Heights, Inc.
J. H. Augustine, Pres.

PIEDMONT ENGINEERING SERVICE
GREENVILLE, S. C.

6624
MAR 14 1955

FINAL PLAN APPROVED
GREENVILLE CITY PLANNING & ZONING COMMISSION
DATE 3-7-55 BY *Arthur R. Jones*
SECRETARY OF COMMISSION

Page 116 for Revision of Lots 83, 84 & 130